



**Panhellenic  
Recruitment 2021  
*PNM HANDBOOK***

Published by Rhodes College Panhellenic Executive Board



# DEAR POTENTIAL NEW MEMBER,

On behalf of the entire Panhellenic Community, I extend to you my warmest welcomes! I am so excited that you have decided to embark on this new adventure, and I hope this experience brings you great joy and fresh connection to the Rhodes Community. In these unprecedented times, it is more important than ever to preserve the social bonds and feeling of interconnectedness that sisterhood provides; I believe that this year's Recruitment has the power to restore a sense of affinity and kinship in the lives and hearts of potential new members and active sisters alike. Though Recruitment will be virtual, it will provide us all the opportunity to reconnect with old friends and form meaningful bonds with new faces. I am genuinely honored to lead you in this rewarding experience and cannot wait to welcome you into the Panhellenic community.

This handbook has been provided to help you navigate the virtual recruitment process and answer some of the questions you may already have. Included is information about Recruitment events, their attire, and the Rhodes Panhellenic chapters themselves. If there is anything else you need, please do not hesitate to reach out to me! After registering for Recruitment, you will also be assigned to a smaller group with two amazing Recruitment counselors (known as "Gamma Chis") to advise you through this process and answer any questions you may have.

Interfraternally.

**Starr Milbury**

**VP Recruitment**

**[milsf-21@rhodes.edu](mailto:milsf-21@rhodes.edu)**

# PANHELLENIC EXECUTIVE BOARD



**Margaret Larson**  
President



**Starr Milbury**  
VP- Recruitment



**Lindley Williams**  
VP- Membership Development



**Madelyn Saye**  
VP- Judicial Affairs



**Liz Vernon**  
VP- Programming



**Hannah Johns**  
VP- Administration



**Emma Cook**  
VP- Community  
Enrichment



**Camryn Corbin**  
VP- Public Relations



---



# VIRTUAL RECRUITMENT SCHEDULE

---



**WEDNESDAY, JAN. 27<sup>TH</sup>**

Classes Begin



**SUNDAY, JAN. 31<sup>ST</sup>**

Potential New Member  
Orientation



**FRIDAY, FEB. 5<sup>TH</sup>**

Open House Round



**SATURDAY, FEB. 6<sup>TH</sup>**

Philanthropy Round



**SUNDAY, FEB. 7<sup>TH</sup>**

Preference Round



**MONDAY, FEB. 8<sup>TH</sup>**

Bid Day

---

# OPEN HOUSE (visit all 4 sororities, 30-minute parties)

## **OUTFIT IDEAS:**

**think a casual winter dress, a cute jumpsuit, or a nice top (be sure to dress like yourself- our best advice is to pick an outfit that makes you feel confident)**

## **WHAT TO EXPECT:**

Open House is your opportunity to introduce yourself, find out who the chapter is, and let them know who you are! You will receive an introduction to the chapter and enjoy some entertainment or an activity. Conversations will be casual. You may meet only one member or 3 to 4, depending on the sorority. Be prepared to talk about where you are from, what activities interest you, what your major might be, where you went to high school, etc.

## **WHAT FOLLOWS:**

After this round of events, you will have the opportunity to prioritize which three chapters you would prefer to return to. Remember that sororities are choosing you AND you are simultaneously choosing them. While it may be disappointing to not be invited back to a house, it is important to focus on the sororities that have invited you back as they are obviously interested in you. Be interested in them and look forward to what lies ahead!

# PHILANTHROPY (visit up to 3 sororities, 35-minute parties)

## OUTFIT IDEAS:

for this night of recruitment, we will provide you with a t-shirt! wear comfortable bottoms like jeans, slacks, or even a skirt (though all the PNMs will match, feel free to add accessories that make your outfit more you!)

## WHAT TO EXPECT:

Philanthropy Round allows you to better understand the philanthropies of the sororities and to learn of their activities. Conversations will be relaxed, and you will get another chance to meet more women in each chapter you visit; maximize this opportunity! Again, you may meet four women, or you may only meet one. Be prepared to talk about the chapter's philanthropy, your previous service endeavors, issues you are passionate about, why you chose Rhodes, what service opportunities you hope to pursue, etc

## WHAT FOLLOWS:

After this round of events, you will have the opportunity to prioritize which chapters you would prefer to return to. Remember that sororities are choosing you AND you are simultaneously choosing them. Be optimistic and excited about your options; though it can be challenging, it is so important to keep a positive attitude during Recruitment.

# PREFERENCE (visit up to 2 sororities, 45-minute parties)

## OUTFIT IDEAS:

**remember that this is the most formal round of recruitment! consider a cocktail length dress or a formal jumpsuit. (show us your best but we advise against overly casual or too revealing)**

## WHAT TO EXPECT:

This is your chance to learn why each member's sorority means so much to them and to get a sense of whether you see yourself as a part of their sorority for life. Conversations will be more serious. Most sororities will have one or two girls greet you. Be prepared to hear women speak about what their sorority stands for. Things can get emotional with heart-felt poems, readings, and stories.

## WHAT FOLLOWS:

After this round, you will rank, in preference order, the sororities you attended (up to 2). If you list all that you attended in the order of preference, there is a high probability that you will receive a bid (invitation to join their sorority). You will also sign the Membership Recruitment Agreement of Binding Acceptance (MRABA), which outlines Panhellenic policy regarding the acceptance of bids. Your Gamma Chi will give you more information when that time comes.

# OUTFIT INSPO BOARDS

## OPEN HOUSE

<https://pin.it/45hxYfj>

GET IT!

## PHILANTHROPY

<https://pin.it/3bzhre>

GET IT!

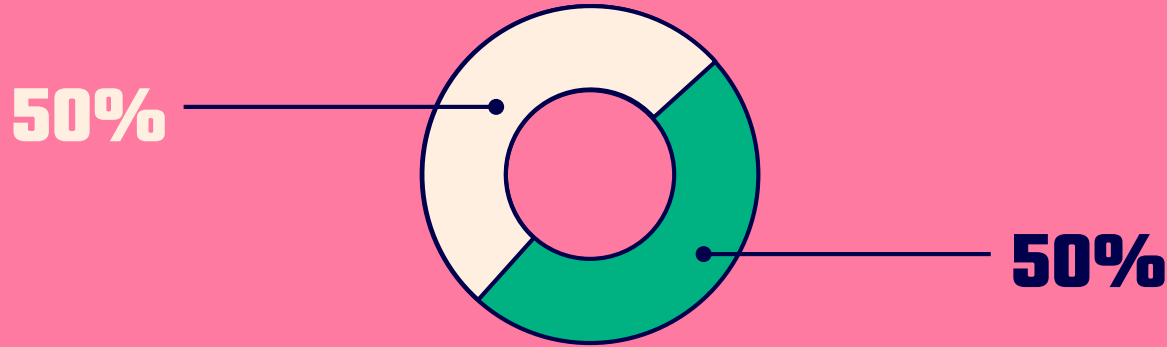
## PREFERENCE

<https://pin.it/2FOycVh>

GET IT!

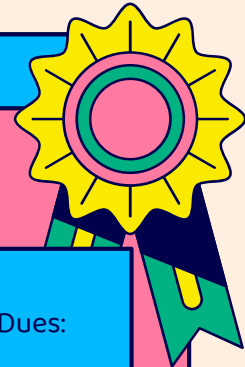


# HOW THE PROCESS WORKS



## PANHELLENIC RECRUITMENT IS A “MUTUAL SELECTION” PROCESS. WHAT DOES THIS MEAN?

It means that sororities are not calling all the shots and neither are you. Both parties have their input and the two are then matched as neutrally and fairly as possible. At the end of every round, Potential New Members (i.e. PNM's) will select the sororities whose events they attended in preferential order. At the same time, the sororities will submit their selection of PNM's to invite back in preferential order. Each PNM's preferences and sorority's selections are processed electronically to generate invitations to the next round. Schedules are then distributed to PNM's via their Gamma Chi leaders and the PNM Companion App. The process continues for the second round of recruitment and preference event, except then instead of generating schedules, bids are generated!



# FINANCIAL TRANSPARENCY

## CONSIDERATIONS

Participation in a Panhellenic sorority is certainly a financial commitment with dues and other fees separate from Rhodes tuition costs. Members must uphold their financial commitments to their national organization and local chapter; thus, it is the job of every sorority member to stay current with their dues. However, it is important to note that most chapters offer both payment plans, reduced fees, and scholarships to make these dues more manageable. It is important to remember that the financial commitment that sorority members are responsible for differs depending on the organization and duration of time spent in that organization.

## TRI DELTA

Pre COVID New Member Dues:  
\$891  
COVID Adjusted New Member Dues:  
\$768  
Pre COVID Initiated Member Dues:  
\$448  
COVID Adjusted Initiated Member Dues (Fall Semester):  
\$325

## CHI OMEGA

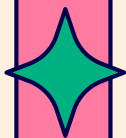
Pre COVID New Member Dues:  
\$895  
COVID Adjusted New Member Dues:  
\$496  
Pre COVID Initiated Member Dues:  
\$620  
COVID Adjusted Initiated Member Dues (Fall Semester):  
\$240

## KAPPA DELTA

Pre COVID New Member Dues:  
\$846  
COVID Adjusted New Member Dues:  
\$746  
Pre COVID Initiated Member Dues:  
\$377  
COVID Adjusted Initiated Member Dues (Fall Semester):  
\$226

## ALPHA OMICRON PI

Pre COVID New Member Dues:  
\$1087  
COVID Adjusted New Member Dues:  
\$810  
Pre COVID Initiated Member Dues:  
\$800  
COVID Adjusted Initiated Member Dues (Fall Semester):  
\$450



# NOTES ON ACADEMICS & LETTERS OF RECOMMENDATION

One of a sorority's topmost priorities is the academic success of its members. Every sorority at Rhodes College sets high standards for its members' academic achievement and provides resources and support to lead members to academic success.

We are proud to say that Greek women's average GPA is consistently higher than that of non-Greek women.

While Panhellenic does not have a minimum GPA for recruitment, it is important to highlight that no Rhodes Panhellenic chapter has a minimum college GPA below a 2.0.



Recommendation letters are written by alumna members on behalf of potential new members during the recruitment process. Although accepted by some chapters, recommendation letters are NOT required to go through recruitment or receive a bid.




If submitting a recommendation, the chapters will accept them in the following ways:  
Online Portal Preferred: Chi Omega  
Letter Mail Preferred: Alpha  
Omicron Pi, Kappa Delta  
Not Accepted: Tri Delta

# RECRUITMENT TIPS



Remember that sorority membership is for life and to make your own decision. It's your choice. Don't listen to your friends, your parents, your significant other, or other potential new members who have stereotyped the sororities. It is a privilege to be part these organizations and each sorority requires high membership qualifications. Keep an open mind and be optimistic about each invitation you receive!

If you don't like a particular sorority, make sure that you are not basing your view on one member you met in the sorority or on someone else's negative opinions. If you are still unsure of whether a particular sorority is for you, please do not share your opinion with people besides your Gamma Chi. This should be a private decision. You never know when your least favorite choice could be your friend's favorite choice or last option.



# RECRUITMENT TIPS





Be yourself; it is so important to remember that sorority recruitment relies on genuine connection. In the long run, you will be happiest in the house where you feel the most comfortable. Stay true to yourself and you will find the house in which you belong!






Although suggestions were given for outfits for each recruitment event, please wear what makes you feel most comfortable. The outfits are not as important as the meaningful conversations we hope you will have with the chapter members.



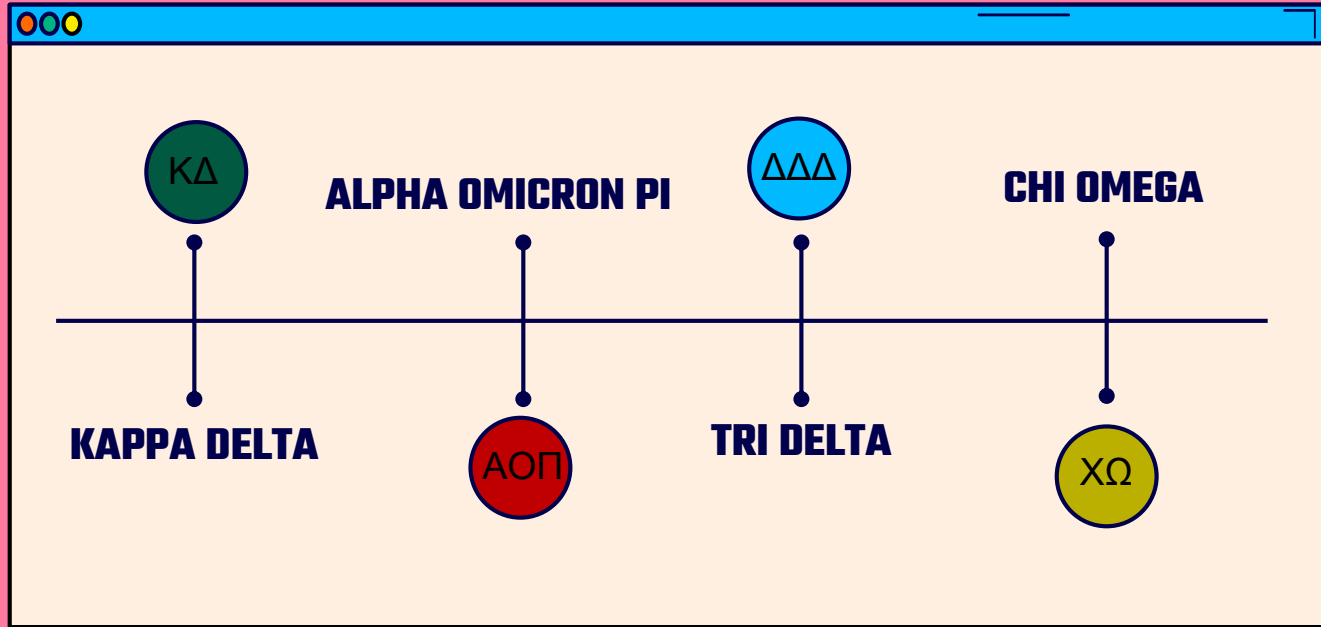
Timeliness is important especially in virtual recruitment. Be on time — early if possible. If you will be absent during a recruitment event for any reason, please reach out to ensure you don't miss out on opportunities to meet the chapters and the women in them.



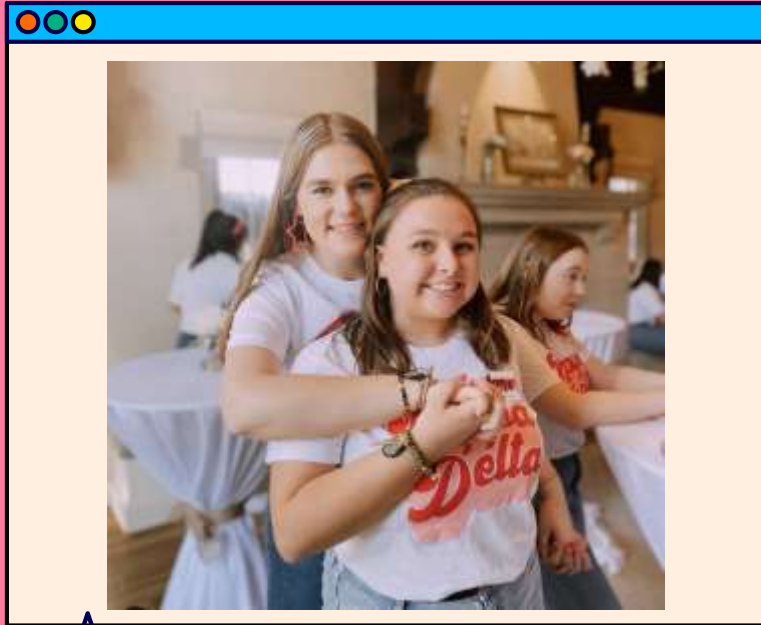
Eat well and get a good night's sleep. You want to be feeling your best when adjusting to a new academic semester and going through recruitment. Take care of yourself.



# PANHELLENIC CHAPTERS

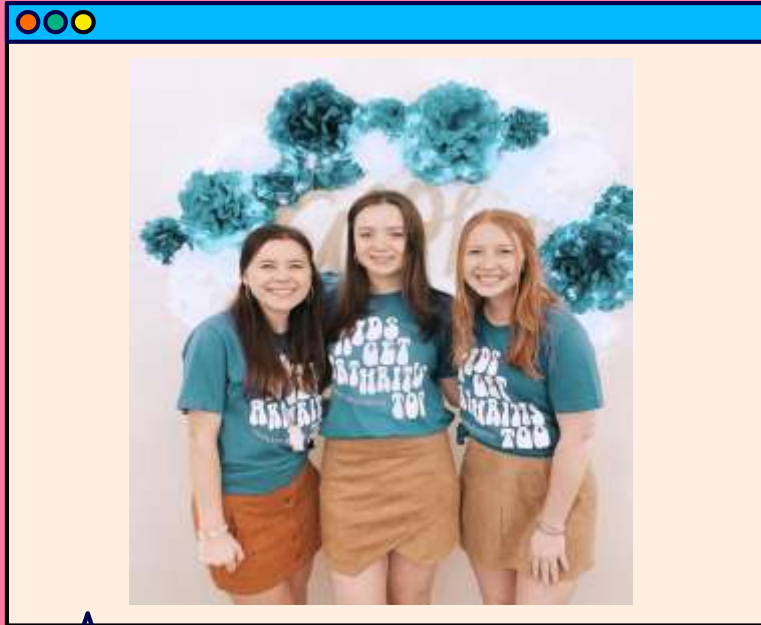


# KAPPA DELTA- alpha delta chapter



- ◆ National Founding : Oct. 23, 1897
- ◆ Local Founding : Apr. 4, 1925
- ◆ Nickname: KayDee/KD
- ◆ Mascot: Teddy Bear
- ◆ Symbols: Dagger
- ◆ Color(s): Olive Green & Pearl White
- ◆ Jewel: Diamond, Emerald, Pearl
- ◆ Flower: White Rose
- ◆ National Philanthropy - Girl Scouts of America & Prevent Child Abuse America
- ◆ Local Philanthropy - Girl Scouts Heart of the South, Prevent Child Abuse TN

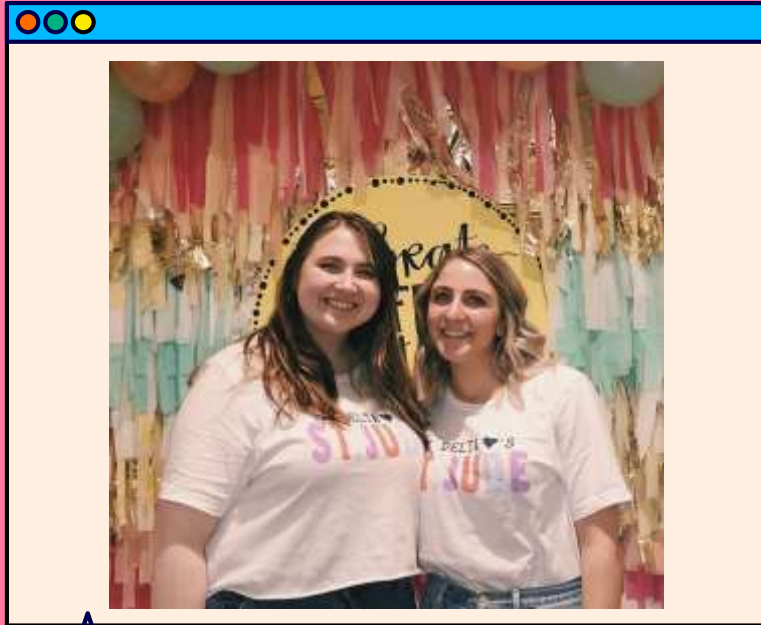
# ALPHA OMICRON PI- kappa omicron chapter



- ◆ National Founding : Jan. 2, 1897
- ◆ Local Founding : Nov. 20, 1925
- ◆ Nickname: AOII
- ◆ Mascot: Panda
- ◆ Symbols: Sheaf of Wheat
- ◆ Color(s): Cardinal
- ◆ Jewel: Ruby
- ◆ Flower: Jacqueminot Rose
- ◆ National Philanthropy –The Arthritis Foundation
- ◆ Local Philanthropy –Boys & Girls Club of Memphis

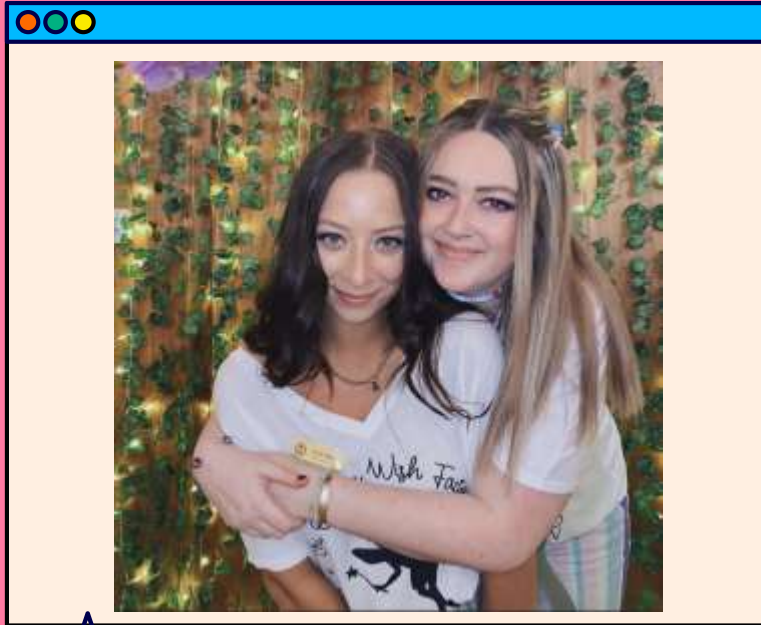


# TRI DELTA- delta psi chapter



- ◆ National Founding : Nov. 27, 1888
- ◆ Local Founding : Apr. 8, 1931
- ◆ Nickname: Tri Delt
- ◆ Mascot: Dolphin
- ◆ Symbols: Pine Tree
- ◆ Color(s): Blue, Gold, Silver
- ◆ Jewel: Pearl
- ◆ Flower: Pansy
- ◆ National Philanthropy – St. Jude Children’s research Hospital
- ◆ Local Philanthropy – Target House

# CHI OMEGA- kappa beta chapter



- ◆ National Founding : Apr. 5, 1895
- ◆ Local Founding : Apr. 5, 1922
- ◆ Nickname: Chi O
- ◆ Mascot: Owl
- ◆ Symbols: Skull & Crossbones
- ◆ Color(s): Cardinal, Straw
- ◆ Jewel: Pearl, Diamond
- ◆ Flower: White Carnation
- ◆ National Philanthropy – Make-A-Wish Foundation
- ◆ Local Philanthropy – Girls Inc

# RECRUITMENT GLOSSARY

## **PNM**

A potential new member. Any person who is eligible to participate in recruitment.

## **BID**

An invitation to join a sorority

## **CHAPTER**

A membership unit of an inter/national sorority

## **RECRUITMENT**

A mutual selection process where chapters seek New Members and PNMs seek membership.

## **NEW MEMBER**

A person who accepted a bid from a sorority but is not yet an active member. They receive education about the organization's values and history to prepare for initiation

## **BID DAY**

The last day of recruitment when potential members receive invitations (bids) to join chapters. The Unanimous Agreements state there is to be no alcohol use or men associated with Bid Day.



## **THANK YOU!**

Please feel free to reach out to me or the Panhellenic Advisor Dom Sarappa ([sarappad@rhodes.edu](mailto:sarappad@rhodes.edu)) with any questions! Once again, I am so excited to welcome you in this exciting process and cannot wait to get started. On behalf of Pan Exec, I wish you the best of luck in all your endeavors!

Starr Milbury  
VP- Recruitment  
[milsf-21@rhodes.edu](mailto:milsf-21@rhodes.edu)



## **SEE YOU IN JANUARY!**